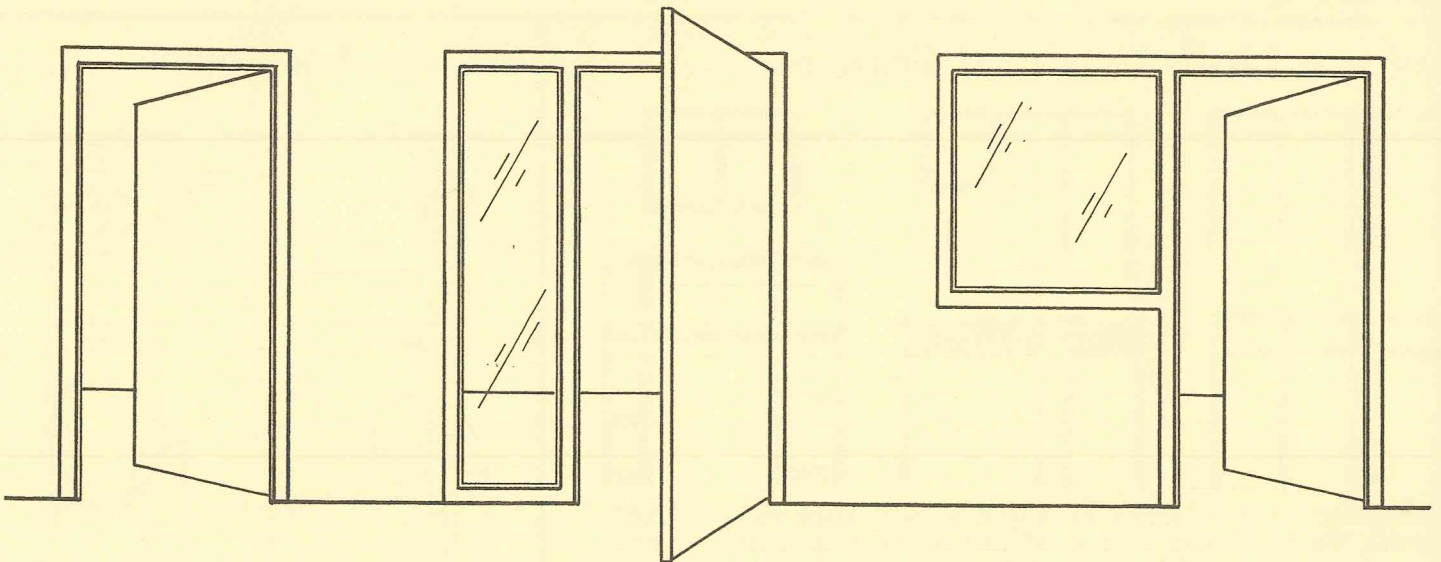


*Providing Quality  
Service for over  
50 Years*

# *Quality Engineered Products Co., Inc.*

**Manufacturers of Steel Doors and Frames  
Distributors of Finish Hardware and  
Architectural Wood Doors**



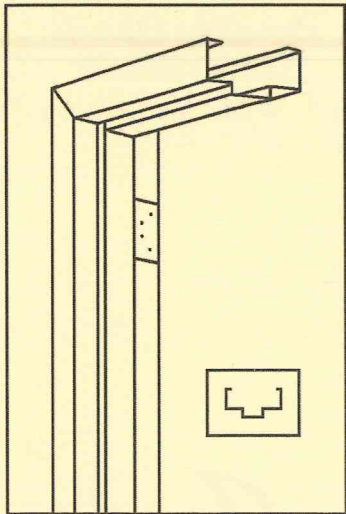
**Steel Doors and Frames That Will Meet Your Toughest  
Commercial and Industrial Requirements**

**QUALITY ENGINEERED PRODUCTS CO., INC.**

**4506 Quality Lane • Tampa, Florida 33634**

**Phone 813-885-1693 • Fax 813-884-2673**

# Standard and Custom Hollow Metal Frames



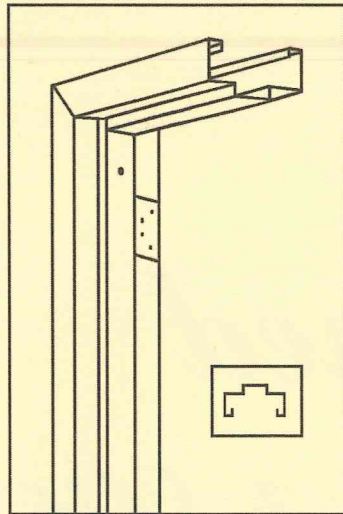
## STANDARD FRAME

### Features:

- Interlocking corner
- Continuously welded
- 14 or 16 gauge
- Galvanized (A60) steel standard
- Anchors available for masonry, wood and steel stud walls
- 3" – 20" jamb depths
- 2" face and 1/2" return standard
- 5/8" stops
- Equal rabbet design
- Prime painted

### Special Options

- Special faces available (any size)
- Special returns available (3/8" – 1-1/2")
- Fire ratings available
- Hospital stops



## KNOCKDOWN PRESSURE FIT

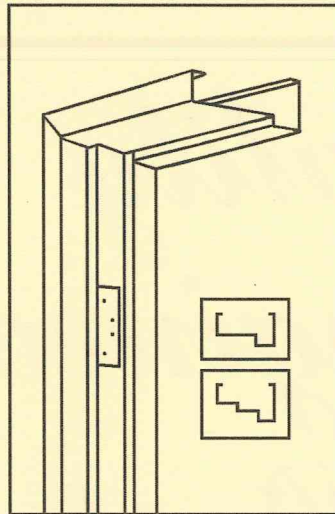
### Features:

- Interlocking corner
- 14 or 16 gauge
- Galvanized (A60) steel standard
- 3" – 14" jamb depths
- 2" face and 1/2" return standard
- 5/8" stops
- Equal rabbet design
- Prime painted

### Special Options

- Special faces available (any size)
- Fire ratings available
- Hospital stops

**Pressure fit frames are designed for installation over finished walls**



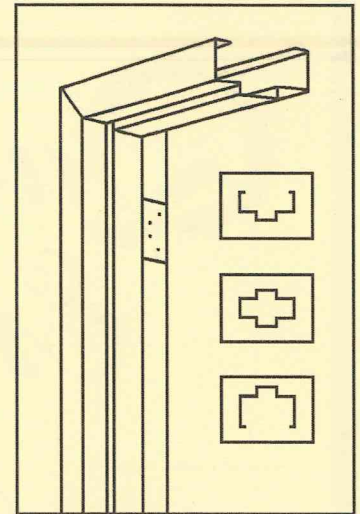
## DOUBLE EGRESS FRAME

### Features:

- 14 or 16 gauge
- Galvanized (A60) steel standard
- Continuously welded
- 5" – 14" jamb depths
- 5/8" stops
- 1/2" return standard
- Anchors available for masonry, wood and steel stud walls
- Prime painted

### Special Options

- Custom faces available (1-1/4" – 4")
- Custom hardware preps
- Fire ratings available



## STOREFRONT AND CUSTOM FRAMES

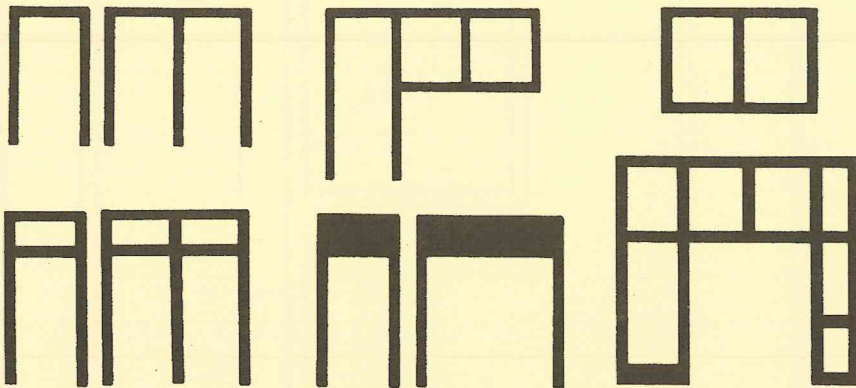
### Features:

- Manufactured to your specifications
- Unlimited sizes
- Custom profile and faces
- 14 or 16 gauge
- Galvanized (A60) steel standard
- Continuously welded
- 5" – 14" jamb depths
- Anchors available for masonry, wood and steel stud walls
- Prime painted

### Special Options

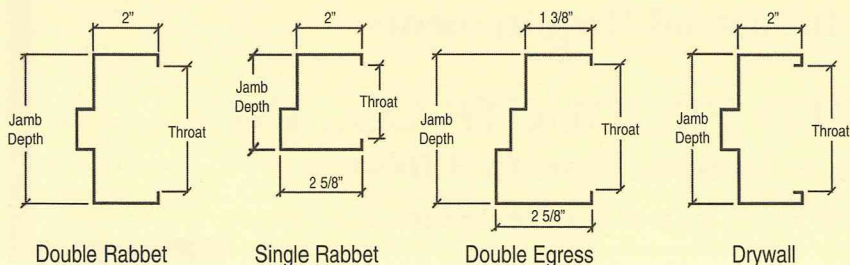
- Custom hardware preps
- Fire ratings available

## Custom Hollow Metal Frames

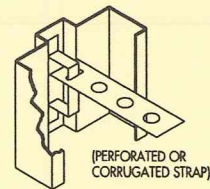


Standard and custom frame illustrations show above are just a few of the designs available. The design possibilities are limitless. All are manufactured to meet or exceed current SDI and HMMA standards.

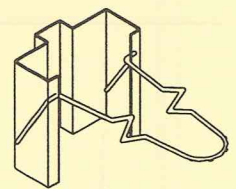
## Frames Profiles



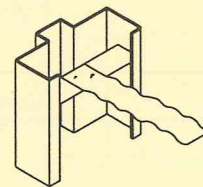
## Frame Anchors



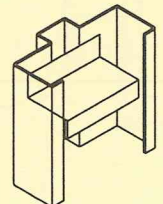
Strap & Stirrup  
(Masonry)



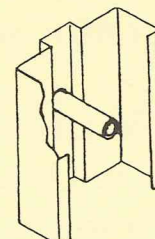
Wire Loop  
(Masonry)



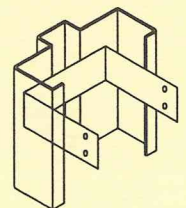
T-Strap  
(Masonry)



Metal  
Channel Stud

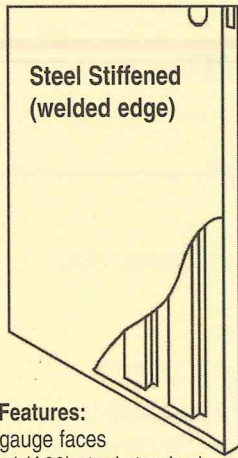


Pipe Spacer



Wood Stud

# Standard and Custom Hollow Metal Doors



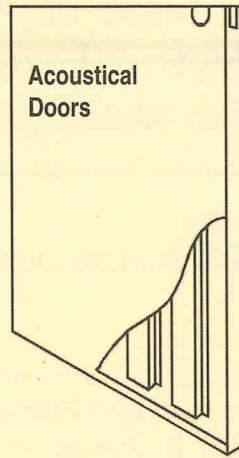
**Steel Stiffened  
(welded edge)**

**Standard Features:**

- 14 or 16 gauge faces
- Galvanized (A60) steel standard
- 20 gauge steel hat shaped
- Stiffeners spot welded on 5" centers
- Fiberglass insulation
- Fully welded edges (seamless)
- Beveled edges (hinge & lock)
- 16 gauge top and bottom channels
- Top closed and sealed flush
- 16 gauge closer reinforcement
- Prime painted
- Meets SDI/HMMA standards

**Special Options**

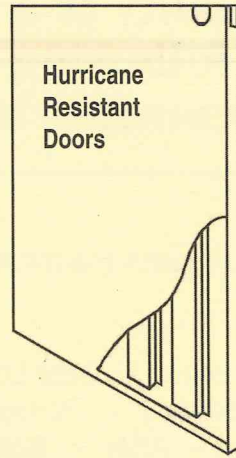
- 450 temperature rise core
- 12 gauge closer reinforcement
- 16 or 18 gauge steel stiffeners
- Custom hardware preps
- Fire ratings available



**Acoustical  
Doors**

**Standard Features:**

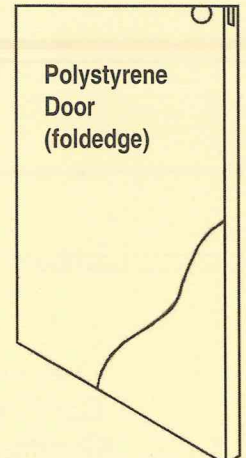
- 16 gauge face
- Galvanized (A60) steel standard
- Seamless design
- Meets STC50 (flush)
- Meets STC41 (window) max 288 sq in
- Includes frame and sound seals
- Beveled edges (hinge and lock)
- 16 gauge top and bottom channels
- Top closed and bottom (sealed flush)
- Prime painted
- Standard hinge prep
- Cam hinges not required



**Hurricane  
Resistant  
Doors**

**Standard Features:**

- 14 or 16 gauge faces
- Galvanized (A60) steel standard
- Seamless design
- Polystyrene or steel stiffened core
- Single doors up to 4'0" x 8'0"
- Pair of doors up to 8'0" x 8'0"
- Flush, full glass and full louver designs available
- Prime painted



**Polystyrene  
Door  
(foldedge)**

**Standard Features:**

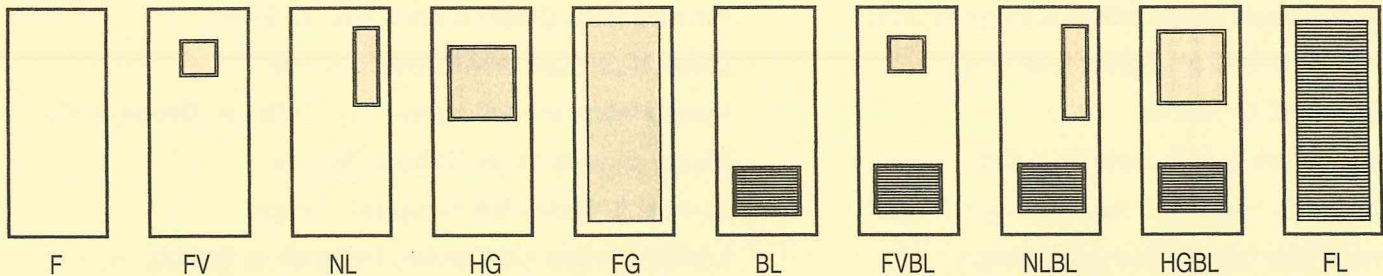
- 16 or 18 gauge faces
- Galvanized (A60) steel standard
- Foldedge construction
- Polystyrene fully bonded core
- Top closed and sealed flush
- 16 gauge closer reinforcement
- Beveled edges (hinge and lock)
- Prime painted

**Special Options**

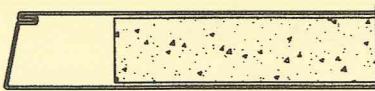
- 12 gauge closer reinforcement
- Custom hardware preps
- Steel stiffened core
- Polyurethane core
- Fire ratings available

## Standard and Custom Door Design

Quality offers a wide variety of door types. Illustrations below are just a few of the designs available. All of the doors provide excellent strength and durability and are manufactured to meet or exceed current SDI and HMMA standards.



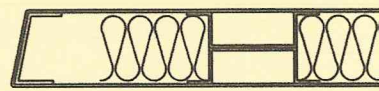
## Technical Construction Specifications



**Foldedge Series**

**Features:**

- Foldedge construction
- 18 or 16 gauge galvanized (A60) face sheets
- Polystyrene, polyurethane or 20 gauge steel stiffened core
- 3/16" thick hinge reinforcements (7 gauge)
- 16 gauge closer reinforcement standard (12 gauge opt)
- 12 gauge lock tabs
- 16 gauge top and bottom channels
- Top closed and sealed flush
- STC and hurricane ratings available
- UL or FM fire label available
- Single doors up to 4'0" x 10'0"
- Pair doors up to 8'0" x 10'0"



**Seamless Series**

**Features:**

- Seamless construction
- 16 gauge galvanized (A60) face sheets
- 20 gauge steel stiffened core with fiberglass insulation
- 3/16" thick hinge reinforcements (7 gauge)
- 16 gauge closer reinforcement standard (12 gauge opt)
- 12 gauge lock tabs
- 16 gauge top and bottom channels
- Top closed and sealed flush
- STC and hurricane ratings available
- UL or FM fire label available
- Single doors up to 4'0" x 10'0"
- Pair doors up to 8'0" x 10'0"

## UL and FM Fire Certifications

**Fire Rated Frames**

Fire labels available for all frames

**Fire Rated Doors**

- 20 Minute Rating
- 45 Minute Rating
- 90 Minute Rating
- 3 Hour Rating

## Dade County Product Certification

A complete listing of Quality's NOAs is available from the Miami Dade Building Code Compliance Office (product control division)  
[www.miamidade.gov/buildingcode](http://www.miamidade.gov/buildingcode)

# Quality is a Full Service Provider of the following architectural wood doors and contract hardware manufacturers

## Wood Doors

Lambton Doors ~ Algoma Hardwoods ~ Mohawk Flush Doors ~ Eggers Industries

## Hardware

Hager Co. ~ Stanley ~ Best Locks ~ Precision Exit Devices ~ Marks Locks  
Cal Royal ~ Rockwood ~ Pemko ~ National Guard Products ~ PDQ Locksets  
Command Access ~ ABH ~ Select Products ~ Trimco ~ Dorma Door Controls  
Lund Key Cabinets ~ Zero International ~ PC Henderson ~ Black and Decker/K2

## Also Available

Schlage ~ Schlage Electronics ~ Von Duprin Exit Devices ~ LCN Closers  
HES Innovations ~ Corbin/Ruswin ~ Glynn Johnson ~ Sargent ~ Norton  
Yale ~ Ives ~ Securitron ~ Rixson ~ Adams Rite ~ Folger Adams  
McKinney Hinges ~ Falcon (Dor-o-matic, Monarch)

## Jobs Completed

Over the years we have furnished numerous major contracts covering the entire state of Florida, Georgia, South Carolina, North Carolina, New York and Texas. We have completed over 200 schools in Palm Beach, Broward and Dade Counties as well as a number of private projects. Listed below are just a few of the projects.

Walt Disney World, Orlando

Miami Beach Convention Center, Miami

North Miami High School, Miami

Sea World, Orlando

Bryant Park Hotel, New York City

Wiregrass High School, Wesley Chapel

Tampa Marriott Waterside, Tampa

Cheeca Lodge, Islamorada

Tampa Airport Post Office, Tampa

Haulover Marina Dock Complex, Miami

Brevard Community College, Cocoa

Mercato, Naples

Ocean Reef Medical Center, Key Largo

Marco Island RWPF, Marco Island

George T. Baker Aviation School, Miami

Florida Gulf Coast University, Ft Myers

Little Haiti Cultural Center, Miami

Pasco Hernando Community College, Brooksville

Miami Senior High School, Miami

James A. Haley VA Hospital, Tampa

Lanier James Ed Center, Halendale Beach

Jupiter Middle School, Jupiter

Lakewood Ranch Retail Shops, Lakewood Ranch

Deerfield Beach Elementary, Deerfield Beach

Coral Springs Public Safety Complex, Coral Springs

Homestead Air Reserve Base, Homestead

Joe E. Newsome High School, Lithia

Miami Carol City Senior High, Miami Gardens

**QUALITY ENGINEERED PRODUCTS CO.**

Phone 813-885-1693 • Fax 813-884-2673

**NAAMM**

National Association of  
Architectural Metal Manufacturers

**MEMBER**